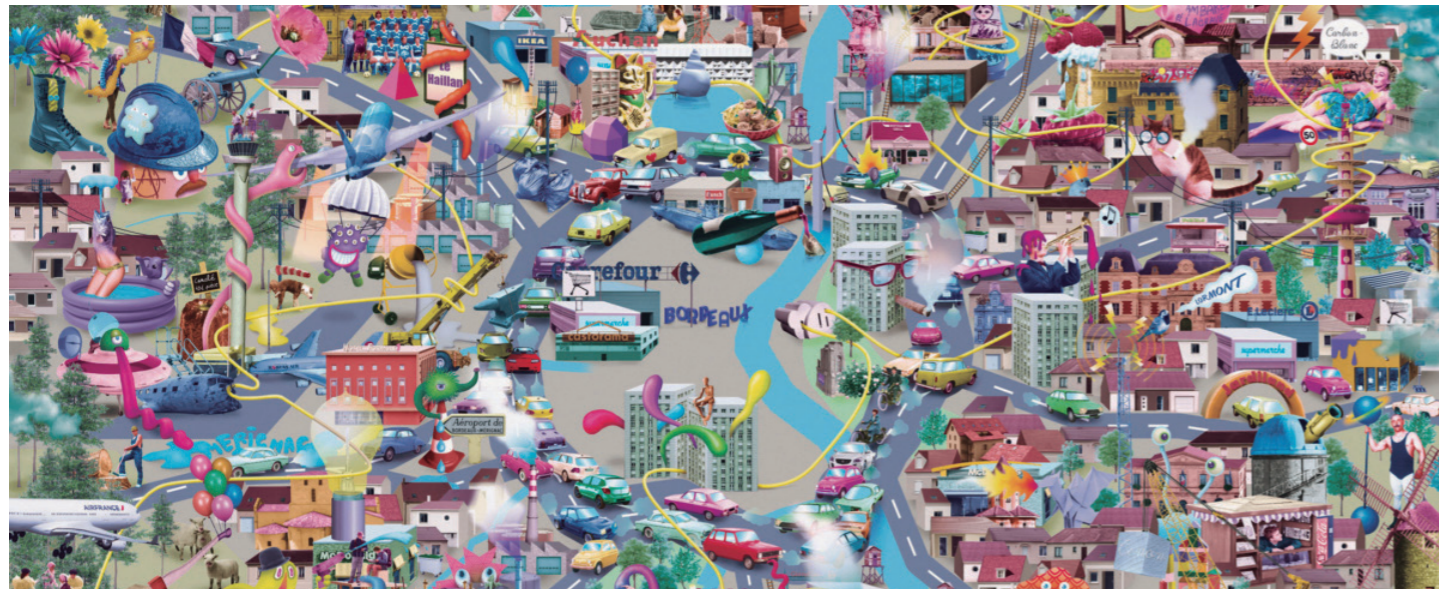


Unscripted Atlas



**Aliouane-Shaw, Hocine¹ with: Gotlieb, Carlos²;
Loover, Jaak-Adam³; Nobile, Maria Luna⁴; D'Oria,
Maria Cristina⁵; Limoncin, Paola⁶; Umani, Vittoria⁷;
De Rivero, Manuel⁸; Santillana, Enrique⁹;
Alvado Bañón, Joaquín¹⁰; Sánchez Merina, Javier¹¹**

¹ ENSAP Bordeaux (France)
hocine.aliouane@bordeaux.archi.fr

² ENSAP Bordeaux (France)
carlos.gotlieb@bordeaux.archi.fr

³ EKA Tallinn (Estonia)
jaak-adam.looveer@artun.ee

⁴ Umeå School of Architecture (Sweden)
maria.nobile@umu.se

⁵ University of Trieste (Italy)
doriariacristina@gmail.com

⁶ University of Trieste (Italy)
PAOLA.LIMONCIN@dia.units.it

⁷ University of Trieste (Italy)
VITTORIA.UMANI@dia.units.it

⁸ Pontificia Universidad Católica (Peru)
mderivero@pucp.edu.pe

⁹ Pontificia Universidad Católica (Peru)
esantillana@pucp.edu.pe

¹⁰ University of Alicante (Spain)
joaquin.alvado@ua.es

¹¹ University of Alicante (Spain)
jsm@ua.es

Citation: Aliouane-Shaw, H. et Al (2026). "Unscripted grounds" UOU scientific journal #11, 110 - 133.

ISSN: 2697-1518. <https://doi.org/10.14198/UOU.2026.11.12>

This document is under a Creative Commons Attribution 4.0 International license (CC BY 4.0)



Rethinking Public Life on Bordeaux's Ring Road Edges was an international intensive workshop organised by the École nationale supérieure d'architecture et de paysage de Bordeaux (ENSAP Bordeaux, France) in April 2026, in close collaboration with La Fabrique POLA and Bruit du Frigo.

Over five consecutive days, it brought together 47 students and 11 teachers from EKA Tallinn (Estonia), the University of Trieste (Italy), the University of Alicante (Spain), Umeå School of Architecture (Sweden), ENSAP Bordeaux, and the Pontificia Universidad Católica del Perú (Peru). The workshop combined two online sessions with an intensive on-site week in Bordeaux. The projects presented at the final review are included in this Atlas.

Students participating:

Abuziarov Tamerlan, Aixa Bell Torrens, Alejandra Pérez del Solar, Alejandro González Vergara, Alessandra Gonzales, Andrea Cárdenas, Arabella Aabrams, Candela Garcia Aliaga, Carolina Lona, Dominik Gromek, Douaae Zaimi, Edoardo Pasini, Elena de Dlego Trancon, Giulia Fantino, Johanna Kerschbaumer, Joos Manon, José Cotta, Kawthar Tazine, Keijo Johann Norden, Keila Carrero, Kelly Grahv, Kristian Tigane, Lagrù José, Lombardo Emanuela, Lucero Flores, Lucrezia Fonda, Macià Inés, Malak Fennan, Malak Khamsi, Mano-Meelis Onni, Manon Vie, Maria Fornes Pulido, Mariana Amado, Melany Padilla, Miguel Garcia Sanjuanbenito, Morgan Razafindrainibe, Nada Souaf, Nailea Juhasz, Raik Artur, Ruben Eder, Ruth Concho, Samuel Savimägi, Saúl Valera, Silvia Merino, Sofia Schneider, Tarany Arcila, Widál Pokam.

The ATLAS includes also - as a result of the call - the student project: **An Idea for Vitezne Namesti**, by Matteo Cuva.

CONTEXT

The Bordeaux ring road ("la Rocade") is a major piece of metropolitan infrastructure: a 45 km urban motorway ring carrying around 250,000 vehicles per day. Beyond its mobility function, it has produced a complex landscape of edges, thresholds and leftover spaces, marked by fragmentation, informal uses and latent possibilities. The workshop took as its starting point the unscripted grounds generated by this infrastructure: places whose status, rules of access and uses are loosened, contested, ambiguous, or not yet stabilised. Through situated observation, the workshop explored how such places might become grounds for prefiguration, where alternative ways of using, sharing and transforming space could be explored through scenarios grounded in present conditions.

OBJECTIVES

The workshop aimed to help students further develop their ability to:

- encounter selected situations along the Rocade directly through collective walks and direct engagement with the site;
- read Rocade-edge situations as situated spatial conditions, shaped by atmospheres, forms of appropriation, constraints and latent resources;
- produce a shared visual understanding of selected on-site situations through visual inquiry and mapping;
- formulate scenario-based spatial propositions that are grounded, legible, and able to address questions of access, use, care and shared responsibility.

WORKING METHOD

Over five days, students worked in mixed international teams to:

- collectively immerse themselves along a Rocade transect, exploring

selected situations through walking and on-site attention;

- document and interpret conditions through visual inquiry, including notes, situated mapping, sketches, photographs, collages and diagrams;
- develop scenario-based proposals anchored in present constraints, while exploring short- and mid-term horizons where relevant.

In this workshop, proposals were understood as prefigurations: transitional steps able to reveal a potential, support or consolidate emerging uses, and prepare a shift towards a more desirable future condition, rather than full architectural or urban projects presented as final solutions. Spatial scenarios were meant to remain anchored in present constraints, with a clear starting situation, a limited set of actions and spatial moves, an indication of the actors involved, and an explicit handling of access, care and responsibility. No on-site construction or installation was expected.

FINAL FORMATS

Each team produced:

- a spatial narrative articulating, in visual form, the observations, interpretations and scenarios developed during the week;
- a short video documenting both the process and the main outcomes of the workshop.

The final presentation combined these materials with process-based physical supports developed collectively during the workshop.

SCHEDULE

- Workshop online presentation: 10 April 2026
- Workshop online lecture session: 17 April 2026
- On-site workshop at La Fabrique POLA and ENSAP Bordeaux: 20–24 April 2026

Latent Link

De Diego Trancon, Elena; Eder, Ruben; Fornes Pulido, María; Grahv, Kelly; Gonzales, Alessandra

Teachers: Aliouane-Shaw, Hocine; Limoncin, Paola; Looover, Jaak-Adam

The spaces surrounding the Ring Road have long operated as an underused, fragmented landscape. Sited between the lake and the river, this zone fractures commercial, industrial, and residential areas, leading to progressive deterioration marked by waste and neglect.

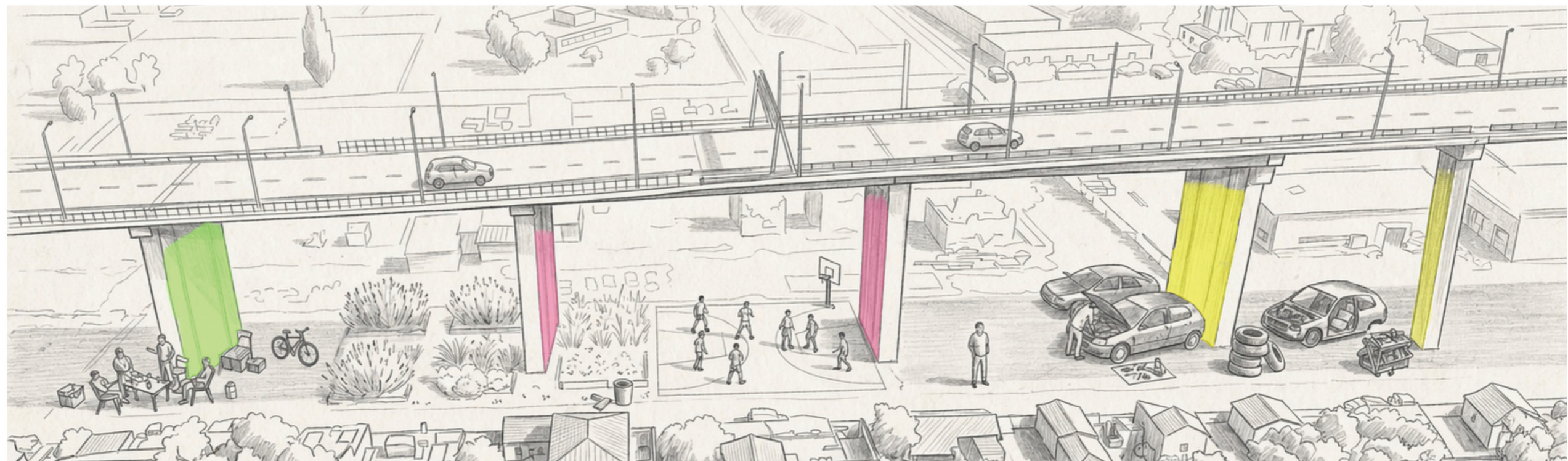
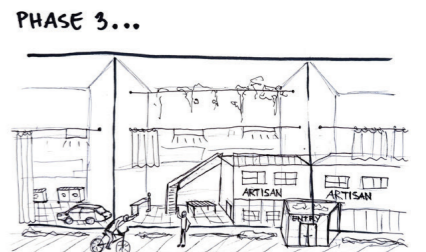
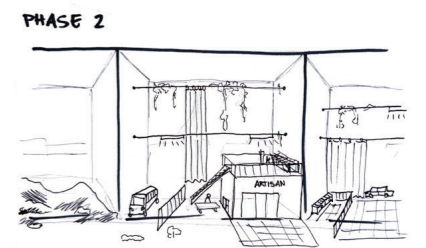
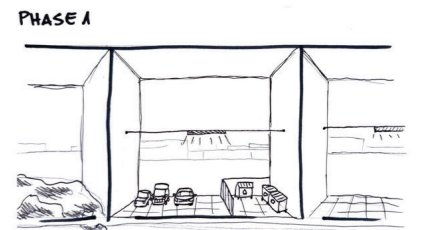
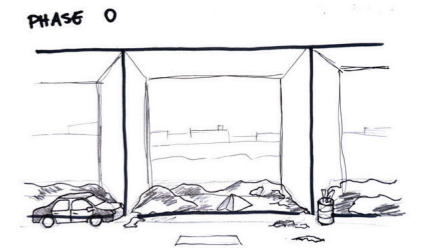
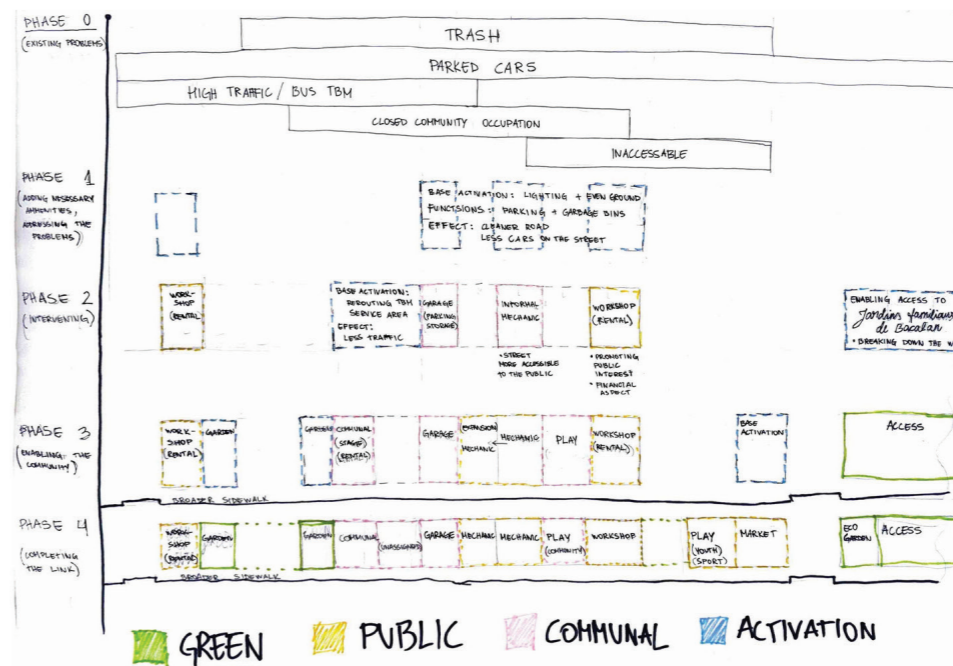
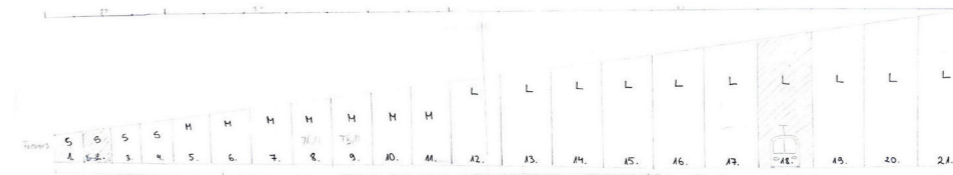
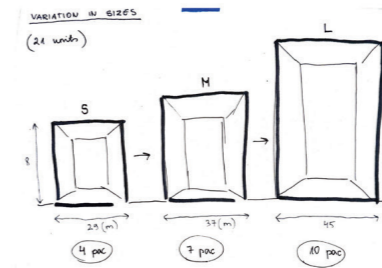
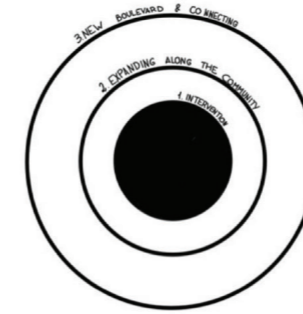
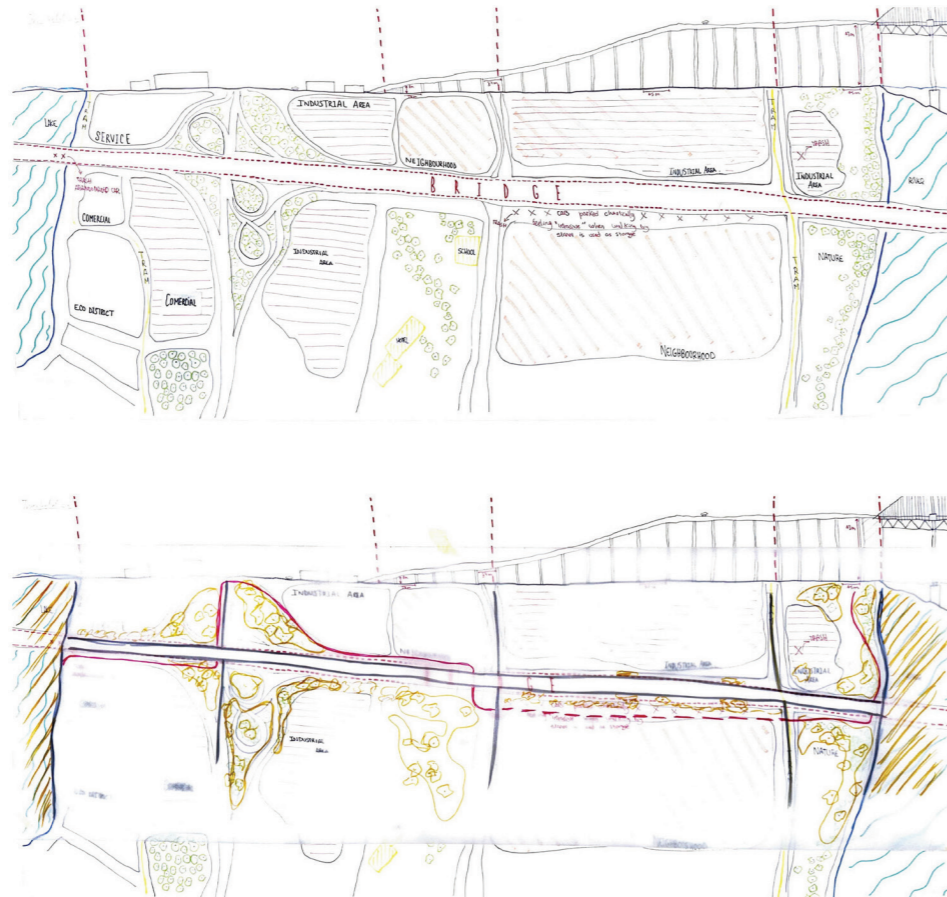
Recognizing that a lack of communal space prevents local appropriation, our project showcase proposes a transformative hypothesis: "Tactical interventions in underutilized spaces foster organic community ownership, acting as a catalyst for broader urban revitalization".

The project identifies the bridge's existing megastructure as a latent opportunity. Rather than imposing heavy, intrusive transformations, it envisions a progressive, site-sensitive strategy utilizing the repetitive structural frames beneath the highway.

This unfolds in carefully measured phases: beginning with essential lighting and ground stabilization, advancing to differentiate frames based on local requirements, and ultimately activating the site with gardens and shared recreational programs.

Crucially, this phased approach negotiates in a sensitive way between the intimate needs of the Bacalan community and the broader context of the city. The final consolidation transforms these spaces into a continuous, flexible boulevard connecting Bordeaux's transversal green systems.

By creating mutual benefits, it ultimately fuses the local neighborhood with the larger urban fabric, fostering dynamic relationships built on collective care and shared responsibility.



Free-Land

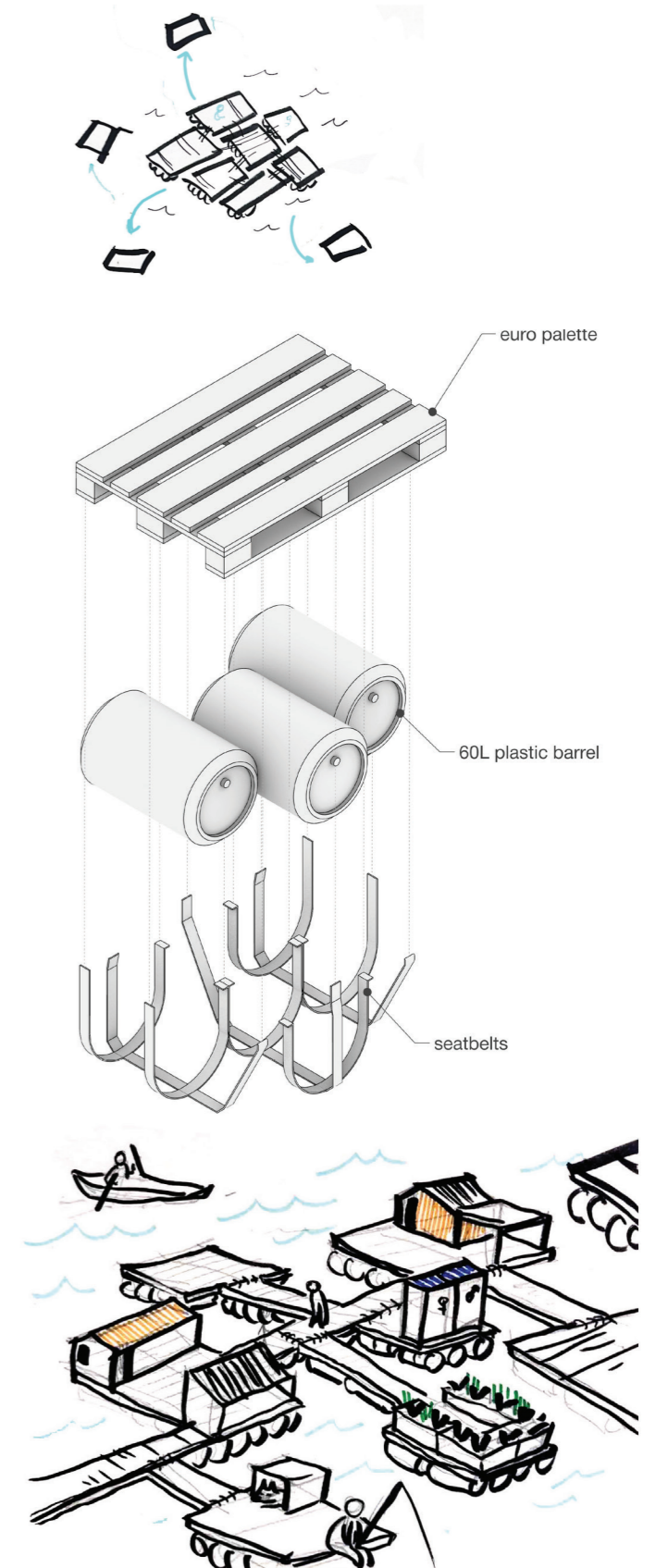
Fennan, Malak; Fonda, Lucrezia;
García Aliaga, Candela; González Vergara, Alejandro;
Norden, Keijo Johann

Teachers: Gotlieb, Carlos; Nobile, Maria Luna; Santillana, Enrique

After our site visit, we identified the lakeside edge along the ring road and began to interpret it as an island, both geographically and socially isolated. This area is currently inhabited by many homeless people who live in extremely precarious conditions, directly exposed to environmental risks such as rising water levels. This observation became the starting point of our project.

We aimed to propose a simple, accessible solution that could provide a basic built structure using materials already available on site: wooden pallets, plastic barrels, nails, and various discarded elements such as car debris. From this, we developed a step-by-step construction guide, allowing individuals to build their own floating structures in an autonomous and adaptable way. Beyond the immediate response to precarious living conditions, the project also engages with broader issues such as the increasing cost of land and housing, as well as the impact of climate change and rising water levels. It evolves into a flexible floating system that welcomes a wide range of users: people who cannot afford rent, homeless individuals, but also artists or temporary occupants seeking alternative ways of living. The project is designed as an open and inclusive environment. The floating units are connected to service stations located on solid ground, ensuring access to water and electricity.

Additionally, the northern part of the site establishes a relationship with the exhibition park, creating opportunities for cultural and artistic events, and reinforcing the project's role as both a social and creative platform.



Revealing the Forgotten Landscape

Fantino, Giulia; Flores, Lucero; Juhasz, Nailea; Khamsi, Malak; Pokam, Widal

Teachers: Gotlieb, Carlos; Nobile, Maria Luna; Santillana, Enrique



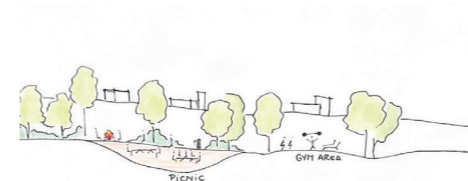
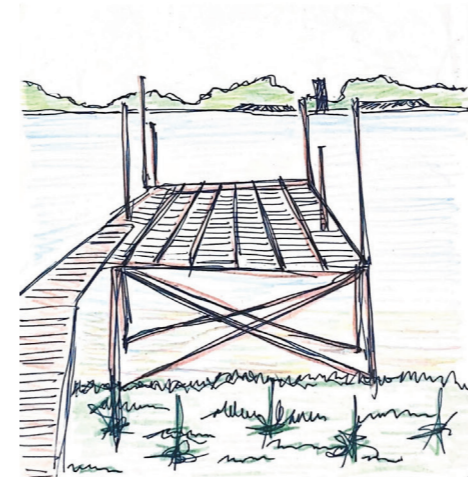
Between the intersection of the Rocade and Bordeaux Lac, in areas that appear abandoned and undefined, we encountered informal settlements. Hidden within the vegetation, these shelters are self-built using materials found in the city. The ground itself reflects accumulation—abandoned carts, cans, and packaging—revealing traces of everyday life.

Despite their precariousness, a clear form of organization emerges. Among dispersed shelters, a shared, lived logic becomes visible. Spaces for cooking and eating act as gathering points, while areas for washing, storing water, resting, and

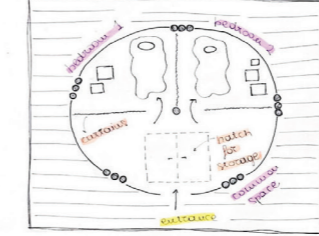
observing the landscape function as collective services. This creates a form of community life that connects people and nature. This discovery reshaped our perception of the site, prompting new questions: what defines daily life here, and how can a place seen as marginal become one of belonging and resilience?

Our proposal responds by imagining the lake as a continuous shared ground. A promenade surrounds it, activating a sequence of services for diverse users, including cooking areas, sports spaces, bathrooms, and water points. Along this path, mobile

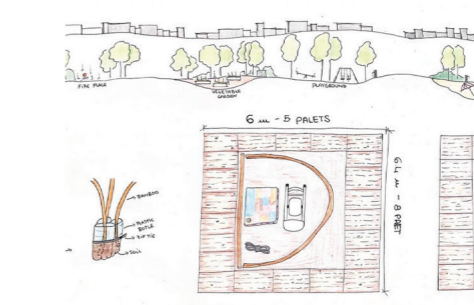
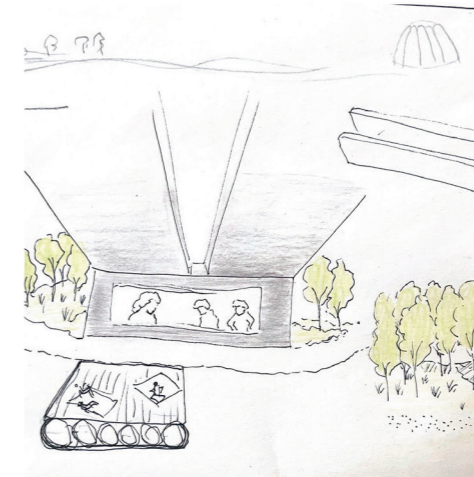
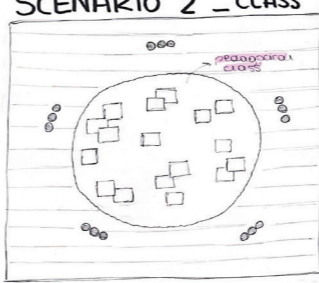
cabins introduce a flexible architecture. Each unit can transform into an open platform, a shelter, or an enclosed space, adapting to different needs and climates. Built from recycled materials and designed for flooding conditions, these lightweight structures are easy to assemble, disassemble, and store. These cabins function as shared tools for refuge, study, and leisure. In return, users contribute to maintaining the environment, fostering collective responsibility. The lake is thus reimagined as a living, evolving system where landscape and community continuously interact.



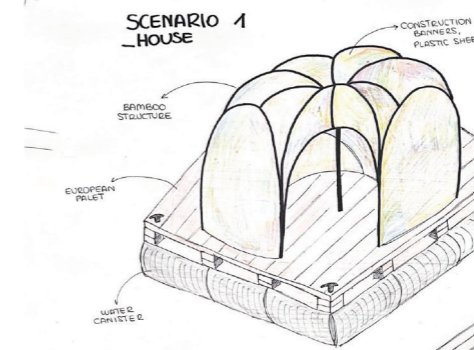
SCENARIO 1 - HOUSE



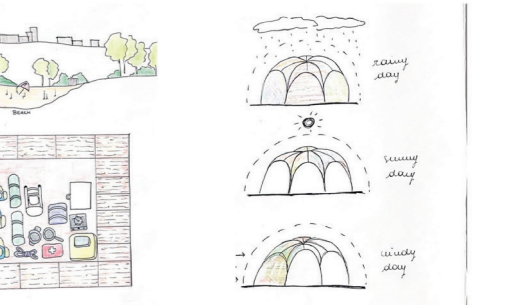
SCENARIO 2 - CLASS



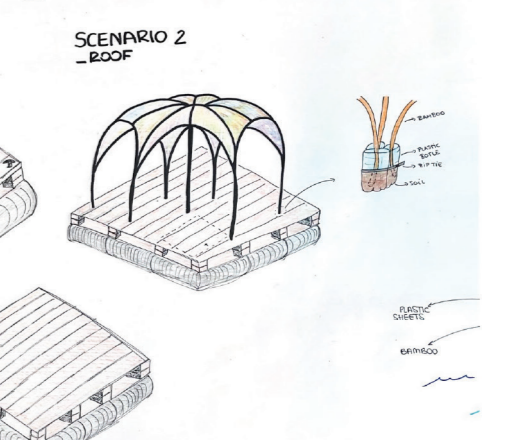
SCENARIO 1 - HOUSE



SCENARIO 3 - PLATFORM



SCENARIO 2 - ROOF



The Street of Many Worlds

Lagrù, José; Lombardo, Emanuela; Macià, Inés; Joos, Manon; Raik, Artur

Teachers: Gotlieb, Carlos; Nobile, Maria Luna; Santillana, Enrique

During the first part of our walk, the Rocade remained almost invisible. As we moved further, it slowly appeared, without dominating the landscape. This changed drastically once we entered the gypsy neighborhood, where the infrastructure revealed itself as a massive and overwhelming presence. Its scale felt inhuman, creating an uncomfortable and oppressive atmosphere.

This moment became the starting point of our project. We chose to transform this space into a more

livable and welcoming environment. At the same time, we observed that the gypsy community lives quite isolated.

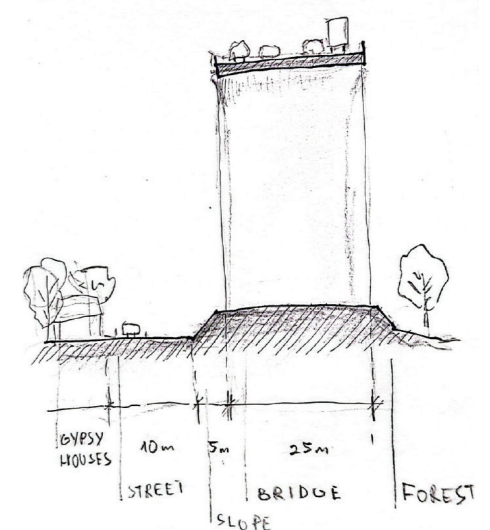
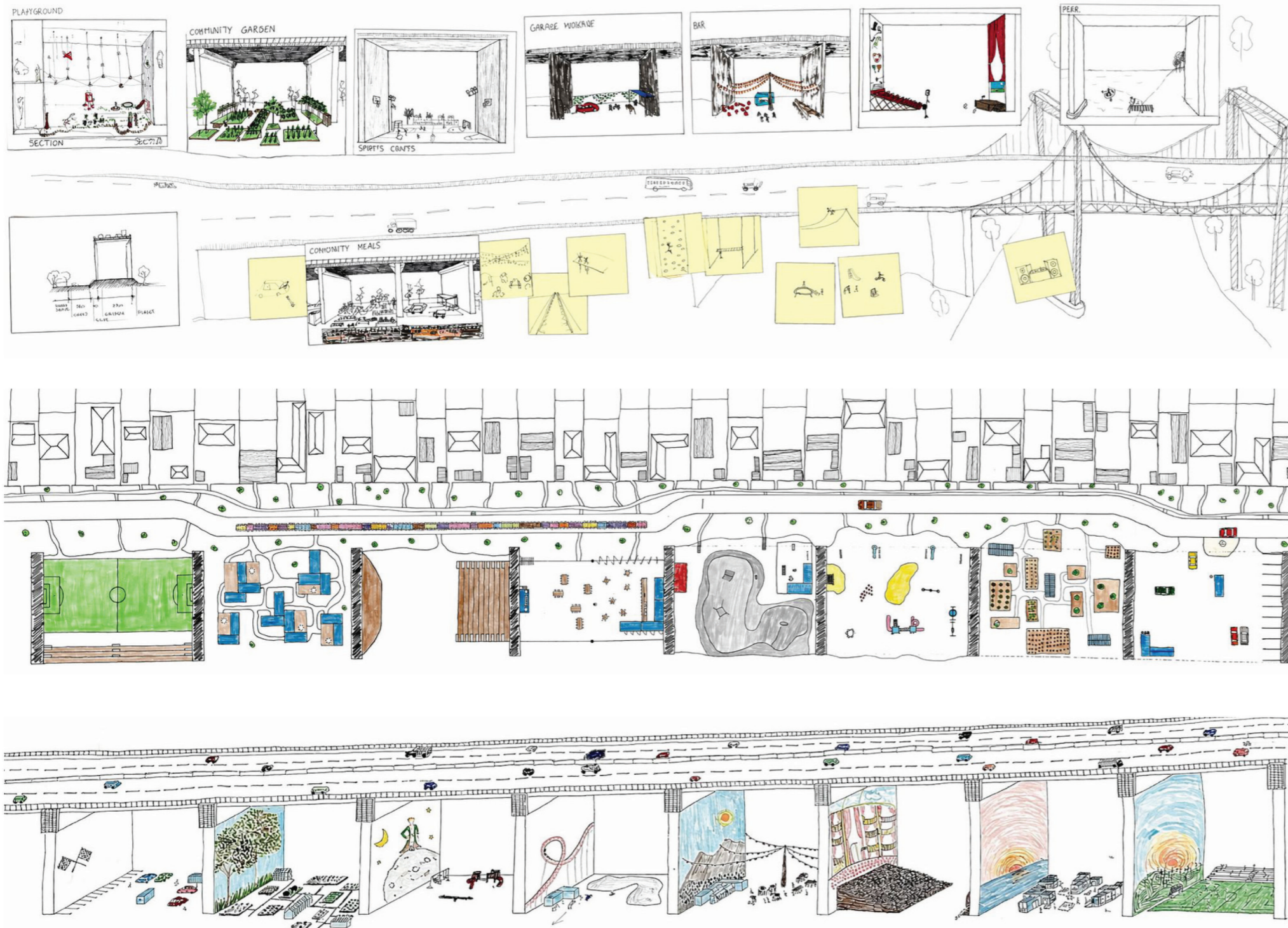
Our aim is to open up this world, while respecting its identity, and to create opportunities for interaction with a wider public.

Our proposal introduces a sequence of large "boxes" between the existing columns. Each box forms a distinct world, defined by its own function and atmosphere. Together, they create a street of

volumes, approximately 30 by 40 meters and up to 40 meters high. Murals reinforce the identity of each space.

The program includes a playground, sports areas, an open-air cinema, a bar, repair workshops, a community garden, and co-working spaces. Reused containers structure the interiors.

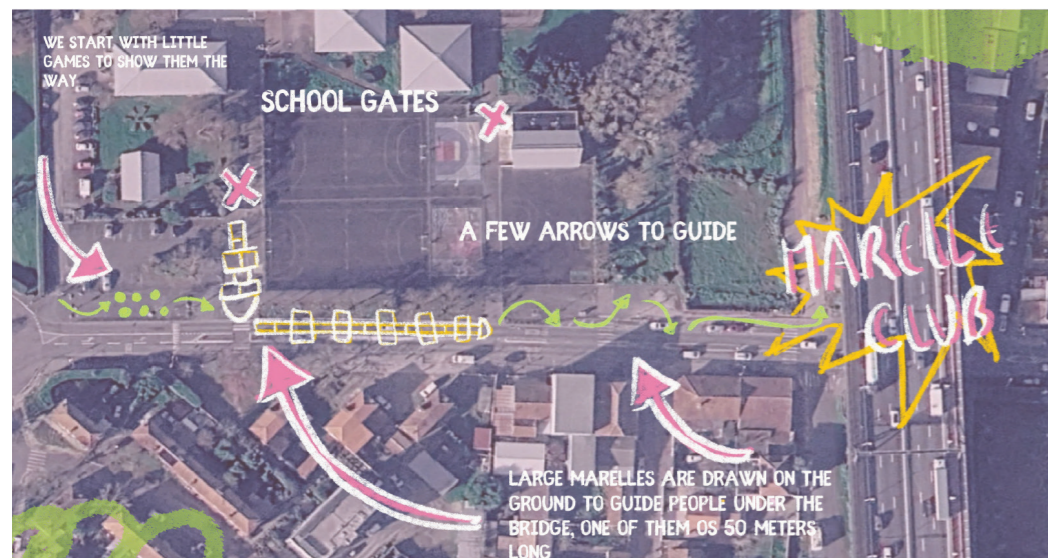
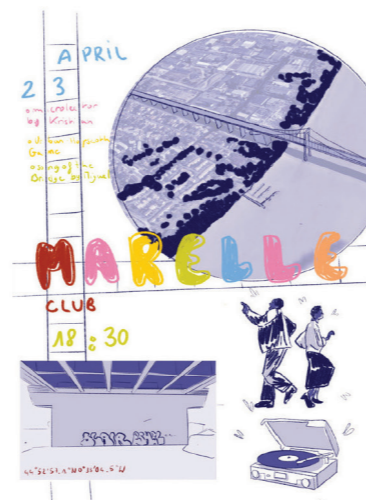
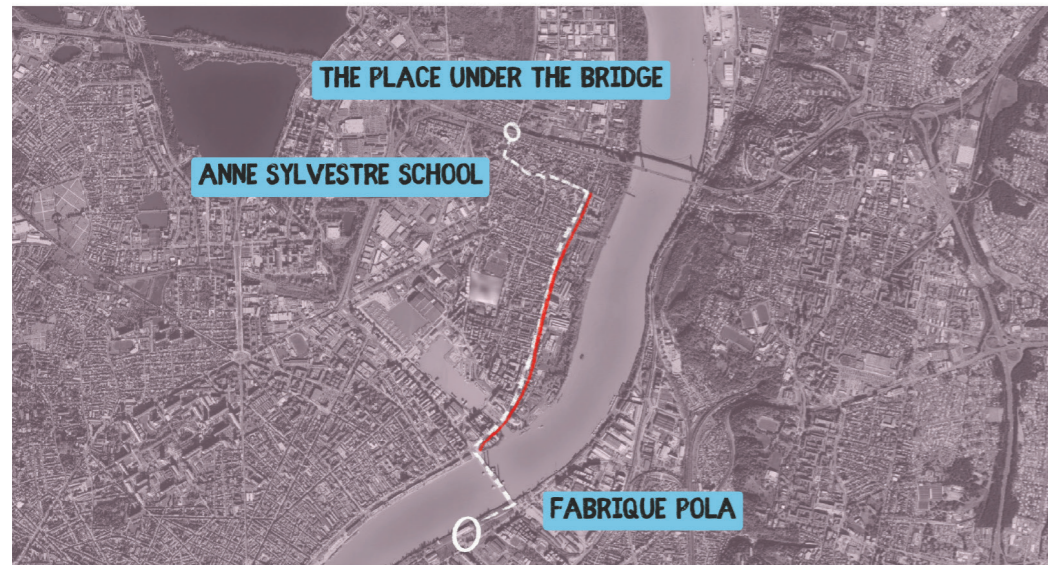
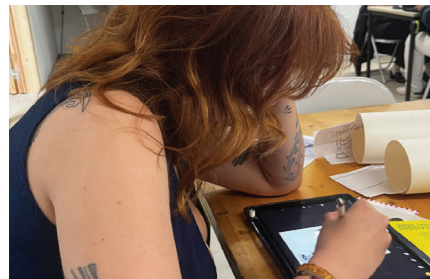
All functions connect to the community while remaining open to everyone, turning the street into a place for shared events and encounters.



Marelle Club

García Sanjuanbenito, Miguel; Tazine, Kawthar; Tigane, Kristian; Vie, Manon

Teachers: Alvado Bañón, Joaquín; D’Oria, Maria Cristina



The bridge is an artificial construction that cuts through the natural landscape, devouring everything on its way like a giant snake.

Motorized machines are carried on its back, but us humans are squashed underneath its belly. It is paradoxically an infrastructure that creates large scale connections, but small scale disconnections. We need to fight this giant snake!

We need to conquer it! We shall punch a hole into its belly and

cut through its separating walls. The disconnection shall become a connection! And there is no better way to do it than by throwing a magnificent party, having fun and games, listening to great bangers and celebrating, while standing face to face with this dreadful serpent!

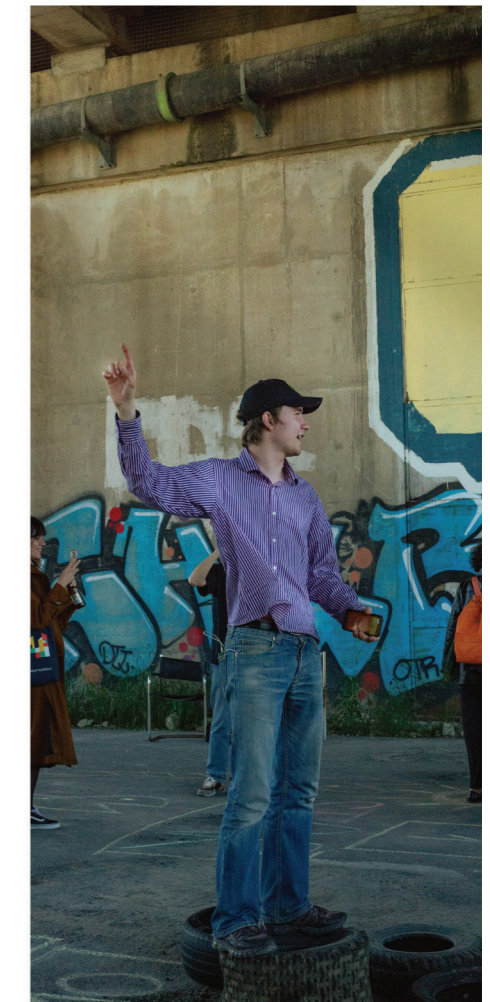
At the very beginning of the week we looked for a topic that could bring people together.

We focused on the Aquitaine Bridge, specifically on the space underneath. We started with

creating a path that would lead the inhabitants towards our gathering space.

Our creation process was guided through the help of the Anne Sylvestre elementary school actors (mediator, students), local businesses and some members of the neighborhood.

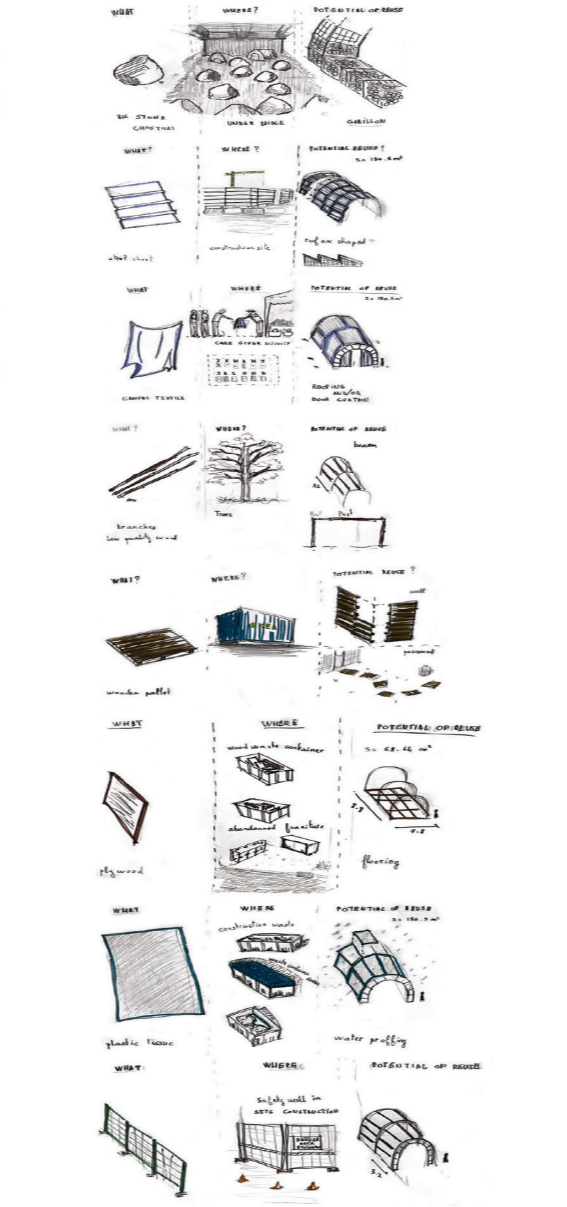
They shared their history with us and inspired our process. We invited anyone to participate in this gathering, including all the workshop members.



Trolley-Land

Carrero, Keila; Kerschbaumer, Johanna; Pasini, Edoardo; Schneider, Sofia; Razafindrainibe, Morgan

Teachers: De Rivero, Manuel; Sánchez Merina, Javier; Umani, Vittoria

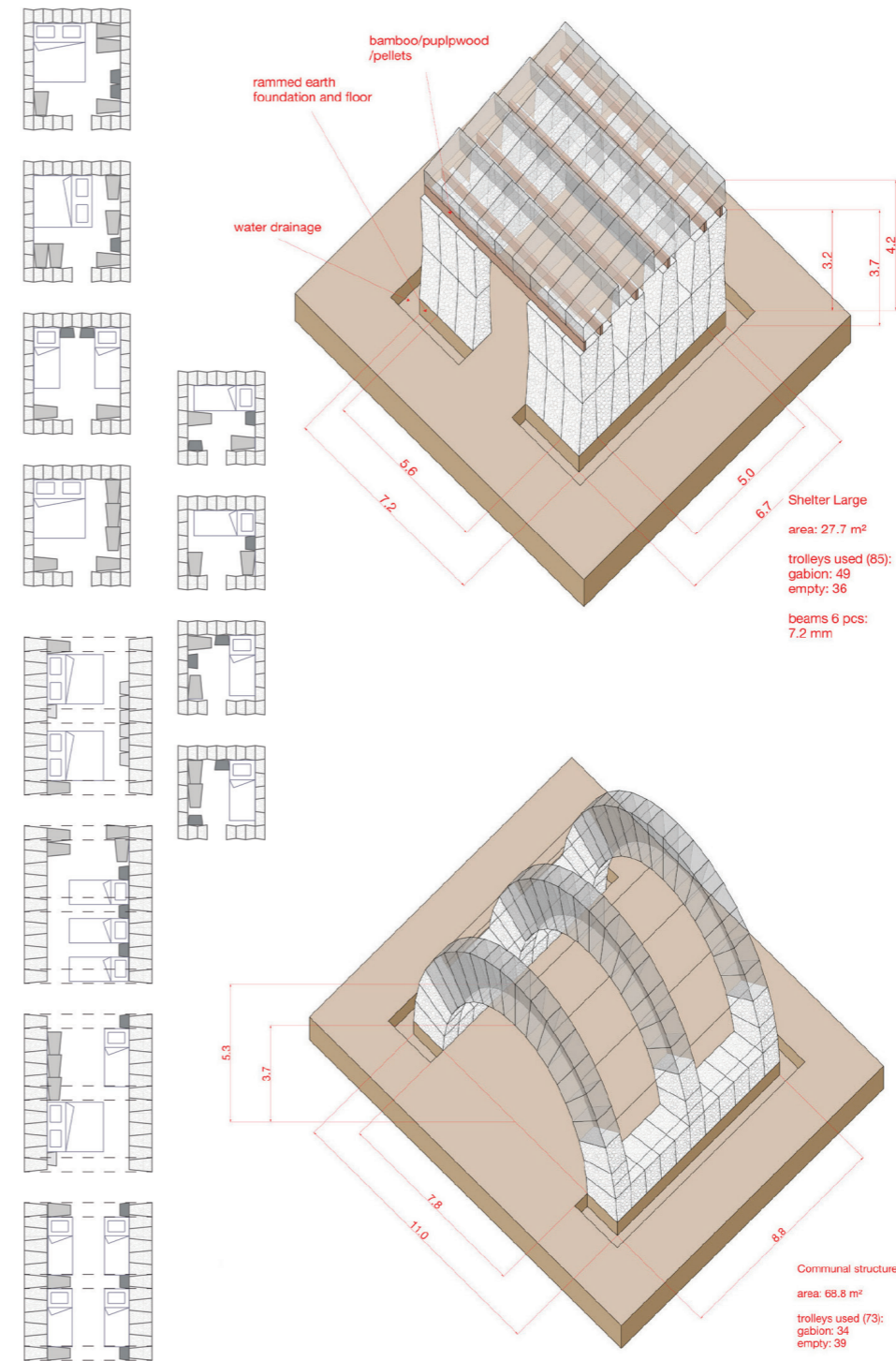


Trolley-land is much more than a shelter for the homeless. It is a model—a way to reuse a very common object in countless ways: providing shelter, water, heat, and many other possibilities. Ours was simply an exploration of the material's potential, which can be further developed in practice.

During the site inspection, two things stood out: the countless shopping carts left in the woods, surrounded by trash, and the homeless community, which had found creative ways to build shelters.

These observations became our starting points: how can we reduce and reuse waste in a productive, architectural way? And how can we improve the living conditions of the homeless using what is already available? These questions led to Trolley-land. What initially began as a sketch of shopping carts reused as showers, stoves, or sinks quickly evolved into a modular system with limitless potential. The trolley (or shopping cart) is imagined not only as a design or furniture object — a shelf, chair, or table — but also as a mobile infrastructural nucleus, enabling access to drinking water,

a shower, or a cooking stove. Furthermore, the trolley also becomes a structural material: when filled with stones found in the area, it functions similarly to gabions, providing stability and strength to the shelters. Once these trolley-gabions are stacked on top of one another, they form walls or arches that can be covered with plastic sheets. The shelters also allow for the organic and efficient development of these settlements, offering anyone with access to trolleys the opportunity to replicate this model of designing and living.



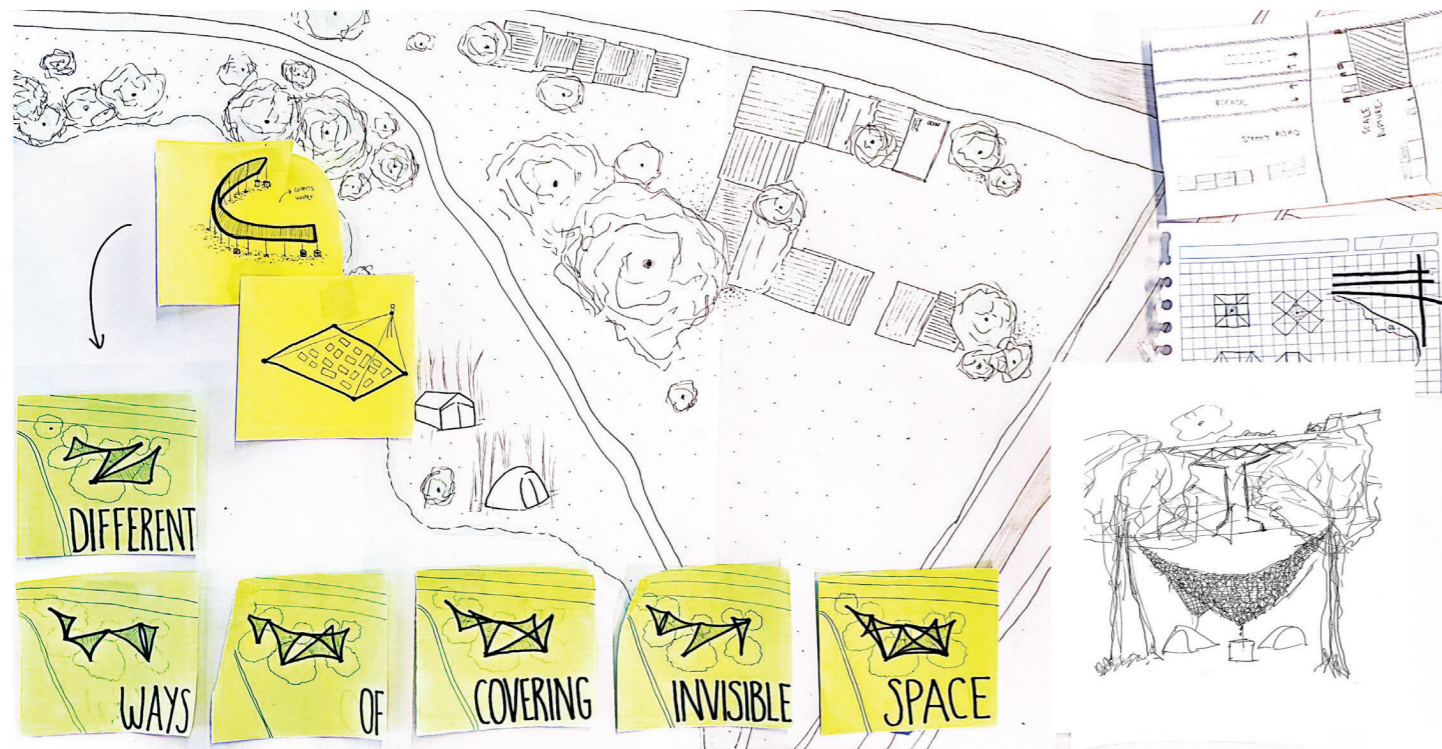
Trolley-land anthem



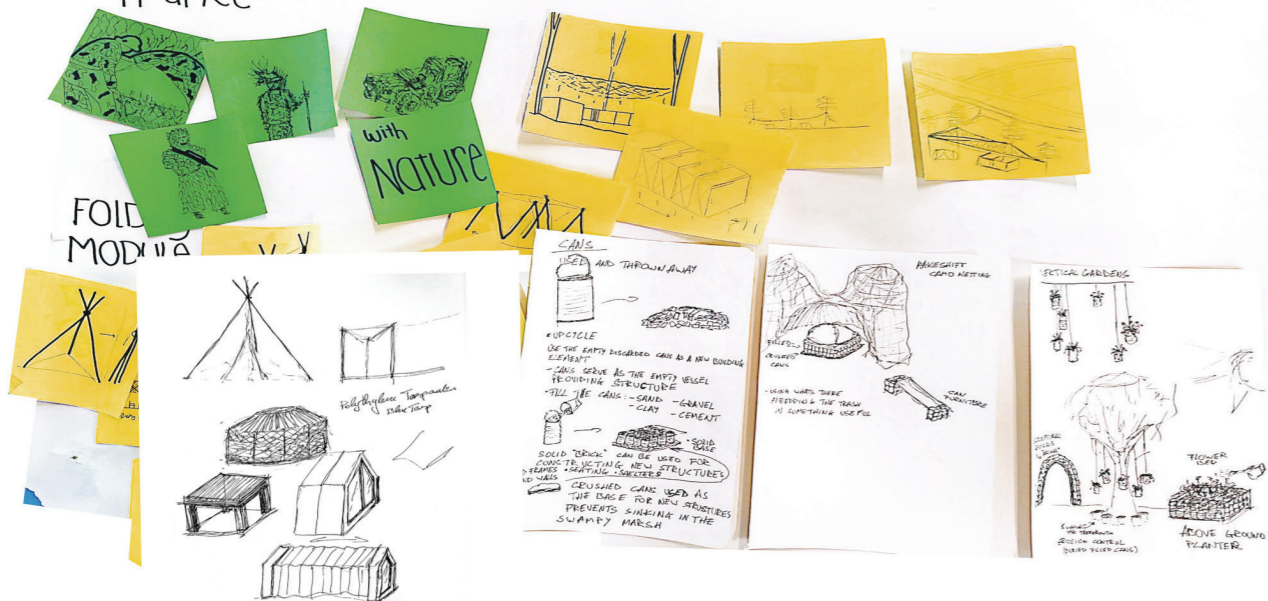
Invisible Architecture

Concho, Ruth; Lona, Carolina; Merino, Silvia; Padilla, Melany; Savimägi, Samuel

Teachers: De Rivero, Manuel; Sánchez Merina, Javier; Umani, Vittoria



Camouflage in France



At the intersection of Bordeaux's A630 and E5 ring roads, a sunken, shielded park reveals a hidden homeless community. Through observation, an existing spatial organization emerged, characterized by improvised shelters, a close connection to the woodland, and a constant presence of discarded food cans.

This context exposes a fundamental paradox: improving these living conditions increases the risk of eviction. Visibility becomes a threat. How can architecture enhance living conditions through discretion rather than exposure?

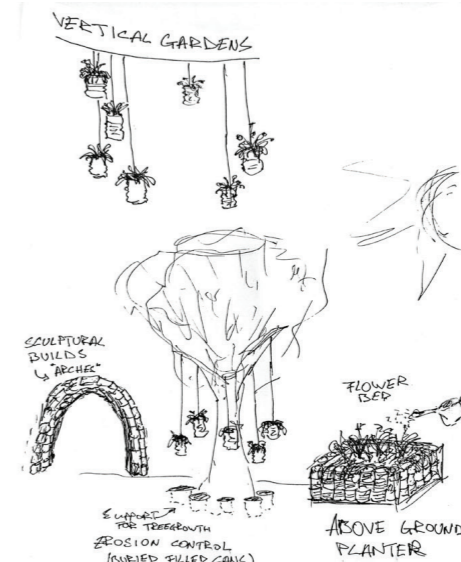
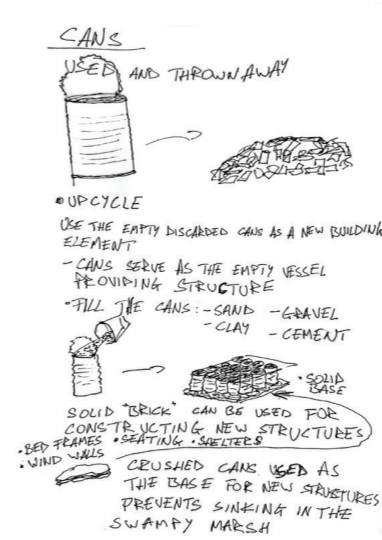
The hypothesis proposes a tactical architecture balancing dignity, anonymity, and mobility.

To achieve this, the project draws on the origins of modern concealment. Born in France during the First World War, camouflage was developed by artist units who designed patterns to blend objects into landscapes—avoiding detection rather than completely disappearing. Today, we repurpose this principle not for war, but to protect a peaceful, fragile community from urban scrutiny.

The proposal unfolds through

three actions. First, a protective camouflage tarp applies these historical principles, merging with the woodland to significantly reduce exposure. Second, a lightweight, demountable housing module introduces tactical mobility, allowing for rapid relocation if displacement occurs.

Finally, the site's food cans are upcycled into "can-bricks," filled with earth to create structural bases. Rather than imposing a new order, these interventions reinforce the existing one, providing tools for a resilient way of inhabiting the margins.



Bordeaux 2100

**Bell Torrens, Aixa; Pérez del Solar, Alejandra;
Souaf, Nada; Valera, Saúl**

Teachers: De Rivero, Manuel; Sánchez Merina, Javier; Umani, Vittoria

Bordeaux 2100 imagines how the city could transform under accelerating climate change. Rising sea levels and dependence on limited fossil fuels cause permanent flooding and the collapse of infrastructures designed for another era. Highways, bridges, and fuel based mobility systems become obsolete.

Instead of resisting, the project proposes adaptation. The Pont d'Aquitaine is reimagined as an elevated, sustainable structure that compensates for the loss of habitable land. Its transformation unfolds in two phases.

Phase 1 focuses on ecological restoration and collective resilience. The bridge becomes a green corridor that restores biodiversity and improves environmental conditions.

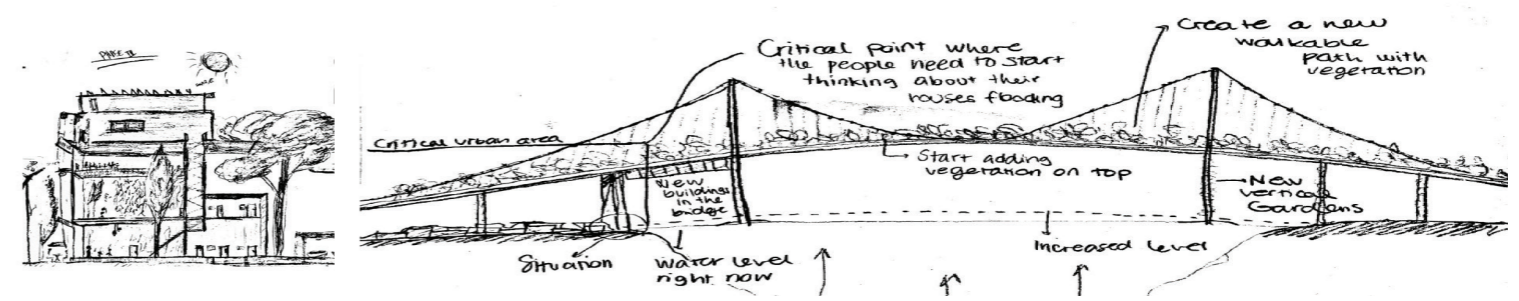
Light, temporary shelters appear for displaced populations. The first inhabitants are gypsy communities, whose mobile lifestyles align with this transition. Shared spaces and vertical gardens strengthen social bonds and support daily survival.

Phase 2 introduces autonomous infrastructure and long term adaptation. As flooding intensifies, the bridge evolves into a self sufficient community. Housing becomes permanent and integrated with natural systems. Mobility shifts to bicycles, boats, elevators, and aerial transport. Energy comes from renewable sources. Vertical organization distributes functions, while farming ensures food production.

Overall, the project demonstrates how adaptation can transform crisis into opportunity, creating a resilient, inclusive, and sustainable model for future living.



Bordeaux 2100



Bordeaux 2050



Bordeaux 2100

An Idea for Vítězné Namesti

An Urban Water Project for Prague

Cuva, Matteo¹

¹ Mediterranean University of Reggio Calabria, Italy.

Teacher: Valerio Morabito

The project “An Idea for Vítězné Náměstí – An Urban Water Project: Prague, Czech Republic” stems from a specific need: to transform an underused area in the Dejvice district into an ecological corridor, while taking two landscapes into account in its development. The project site is situated at a key junction, sandwiched between the ČVUT campus, the NTK, and the major traffic arteries converging on Vítězné Náměstí.

The two landscapes, whose processes will be replicated and amplified in Dejvice, are: wetlands and Adrspach sandstone formations. The latter are the result of millions of years of erosion on vast slabs of Cretaceous sandstone, a sedimentary material that has solidified into horizontal layers. From these, key concepts are reworked, such as the idea of a monumental vertical mass emerging from a dense landscape and the texture of the rock. Wetlands, on the other hand, represent a fundamental ecological heritage; these freshwater ecosystems are at the heart of the country's biodiversity and hydrological balance, acting as a natural biological filter by absorbing excess nutrients, heavy

metals and other pollutants. The project therefore, seeks to unite the human sphere with the natural and ecological aspects of the landscape, emphasizing, as the landscape architect wrote, the role and purpose of the most significant traditional urban landscapes, their capacity to function as important containers¹, while setting aside the vision of an urban landscape that is purely aesthetic.

Worth noting is the project's dual dichotomy linking the two landscape archetypes. The first is ‘wet at the bottom, dry at the top’; the buildings are in close contact with the water, moisture-resistant at the base as they are situated within the wetland, yet with a surface suitable for bio-colonization at the top, much like an Adrspach rock. The second, however, is ‘horizontal fluidity, vertical monumentality’, which encapsulates the project's conceptual foundation.

The design response was a gesture of organic composition. To translate this vision into a site plan, we drew on the artistic legacy of Alphonse Mucha; the route's lines are, in fact, sinusoidal, creating a fluid ribbon that winds its way along the ecological axis. The structures

within it are conceived as a dynamic hub, an immersive retreat, a venue for workshops or even an exhibition space dedicated to the materials of the future – all, of course, spaces linked to a university context. They have, in fact, been designed to be used by students as well as residents, thereby emphasizing the project's strong social value, which, as landscape architect Ian McHarg points out, encompasses a wide range of elements such as “institutional, residential, historic, recreational and scenic values”².

Finally, the sections help make it easy to understand how the ecological axis functions. Through them, one can grasp: the dual function of the buildings—some ‘habitable’, others serving as a protective shell for the filtered water—the relationship between artificial and natural elements, and the behavior of the trees, which, of course, mirrors that of the bio-parks.

CITED WORKS

1. CHARLES, Waldheim. The landscape urbanism reader. New York, N.Y.: Princeton Architectural Press, 2006. ISBN 9781568984391.

2. MCHARG, Ian L. Design with Nature. Natural History Press, 1971. ISBN 9780385055093.

